

Clare County Land Bank Authority

Pre Demolition ACM Survey

1691 Maple Street

Lake, MI

Pre Demolition ACM Survey

8/5/2024



MID-STATE ASBESTOS REMOVAL, INC.

817 N. HUBBARD • P.O. BOX 66 • ST. LOUIS, MICHIGAN 48860

Insulation • Sprayed Fireproofing • Asbestos Abatement

Select Demolition • Environmental Inspections

Commercial • Industrial • Residential

TONY KIRBY

CELL: 989-620-4258

TONY@MARINC.NET

BUS. 989-681-2413

FAX: 989-681-4187



**1691 Maple Street
Lake, MI**

Clare County Land Bank Authority

Jenny Beemer-Fritzinger

989 539 7801

beemerj@clareco.net

1.1 Introduction

On August 5, 2024, Mid-State Asbestos Removal Inc. was contracted by Jenny Beemer-Fritzenger of the Clare County Land Bank Authority, to conduct a Pre Demolition Asbestos Survey at 1691 Maple Street, Lake, MI.

1.2 Purpose

The purpose of the Pre Demolition Asbestos Survey is to identify Asbestos Containing Building Materials (ACBM'S) that may be impacted during demolition activities. Drawings were not provided for the sample collection portion of the project. All measurements and quantities mentioned in this report are estimated and are to be considered approximate.

1.3 Scope of Work

19 bulk samples were collected throughout all accessible areas. Samples of Suspect Asbestos Containing Building Materials (SACBM'S) encountered during this survey were collected and sent to a N.V.L.A.P. accredited laboratory for analysis.

1.4 Laboratory Analytical Procedures

Samples collected were submitted to San Air Technologies Laboratory for analysis. Chain-of-Custody guidelines were followed to ensure proper handling and delivery of the samples. The S.A.C.B.M. samples were analyzed using Polarized Light Microscopy (PLM) with dispersion staining in accordance with EPA/600R-93/116.

The USEPA defines ACBM as those materials that contain greater than 1% asbestos. Percentages and types of fibrous components in these samples were determined by visual estimation of the amount of fibrous material versus the total amount of material present. The OSHA definition of ACBM is any material that contains greater than 1% asbestos as well. Materials containing less than 1% asbestos are considered to be non-asbestos containing are therefore are not regulated.

1.5 Suspect ACBM'S

Suspect asbestos containing building materials encountered during this survey are:

Flooring Materials, Ceiling Materials, Roofing Materials, & Miscellaneous Materials

1.6 Bulk Sample Inventory

M.A.R. collected 19 bulk samples during the course of this survey. All samples were collected in accordance with AHERA guidelines. Sample locations selected are representative of the entire survey area. Random sampling protocol was used to determine sample collection locations.

1.7 Sample Submittal Form/Chain of Custody/Analytical Results

See Attachments:

- Analysis Results & CoC, 1691 Maple Street, Lake, MI

1.8 Materials List

1.8A: Asbestos Containing Materials List

Analytical results indicate that the following materials contain trace-1% or greater asbestos content. FS# indicates the Functional Space where the material is present. Further detail can be found in each individual Functional Space section of this report.

Asbestos Containing Materials				
HM#	Sample#	Description/Location	Quantity	Asbestos Content
6	016	RoofCoating/MobileHome/Gray,Black	600sqft	Roof Coating 2% Chrysotile
7	006	Undercoat/Sink/Black	10sqft	Undercoat 2% Chrysotile
9	012	Sealant/Door/Cream	5sqft	Sealant 10% Chrysotile
10	013	Sealant/OldWindows/White,Gray	10sqft	Sealant 10% Chrysotile

* QUANTITIES ARE ESTIMATED, abatement contractors are required to verify materials and quantities on site.

1.8.B “ASSUMED” Asbestos Containing Materials List

“Assumed” Items are items likely containing asbestos that could not be sampled and tested at this time. FS# indicates the Functional Space where the material is present. Further detail can be found in each individual Functional Space section of this report.

Assumed Asbestos Containing Materials				
HM#	Sample#	Description/Location	Quantity	Asbestos Content
14	Assumed	Furnace *NOTE1	1ea	Assumed

* QUANTITIES ARE ESTIMATED, abatement contractors are required to verify materials and quantities on site.

*NOTE1- Furnace-Although a furnace was not observed, many areas are so filled with clutter and debris that observability is limited. If a furnace is present, it should be Assumed ACM due to internal components.

1.9 Summary

1.9.A Limitations and Definitions

M.A.R. uses trained and licensed asbestos inspectors in attempting to locate and quantify potential ACMB's within structures.

Areas enclosed by fixed wall, ceiling and roofing systems were restricted to limited visual access in identifying materials such as plaster, drywall, Thermal system insulation and roofing. The possibility exists that all ACBM's were not identified within the structure. All quantities are estimated.

This survey is intended to identify potential asbestos containing materials only.

1.9.B Summary

All materials listed in section 1.8, are to be assumed asbestos containing or contain greater than 1% asbestos. Current regulations indicate that any material that contains 1% or greater asbestos content is considered to be a regulated material.

All regulated materials are to be handled by qualified persons. Regulated materials that may be impacted or disturbed during renovation, demolition or maintenance activities are required to be abated and disposed of properly by qualified persons. All waste accumulated must be manifested and disposed of in a type II landfill as required by regulating agencies.

Potential lead based materials may or may not exist within this structure. This Pre-demolition asbestos survey is specifically designed to identify potential asbestos containing building materials that may be impacted during demolition activities and excludes any sample collection or verification for lead based paint or other hazardous materials.

If there are questions regarding information within this survey, we recommend that our field representative be contacted prior to activities that may impact any materials that may potentially contain asbestos. Thank You.

Respectfully,

Gary D. Church

Mid-State Asbestos Removal Inc.

Accreditation # A 51899

Reviewed By,

Tony Kirby

Mid-State Asbestos Removal Inc.

Accreditation # A 13136

2.0 Homogenous Materials Sample List (HM#)

Sample #s are used to identify individual samples through the sampling and analytical process. Homogenous Materials #s are assigned to groups of samples of the same materials. The materials description nomenclature generally includes Material/Size/Color/Functional Space/Sample Location, and other information as applicable. For purposes of this report, HM#s are used. Any asbestos content present indicates all samples of the respective HM# are to be considered to be asbestos containing material (ACM).

1691 Maple Street, Lake, MI			
PreDemolition ACM Survey, 8/5/2024			
Jenny Beemer-Fritzinger, 989 539 7801, beemerj@clareco.net			
Sample Descriptions By HM#			
HM#	Sample #	Flooring Materials	Asb Content/Comments
1	001	LaminateFlooring/Brown,Black/FS1-1	
2	002	FloorTile/9x9/Tan/FS1-1	
3	010	FloorTile/12x12/Cream/FS1-6	
HM#	Sample #	Ceiling Materials	Asb Content/Comments
4	003	AcousticCeilingTile/12x12/White/FS1-2	
	004	AcousticCeilingTile/12x12/White/FS1-2	
	005	AcousticCeilingTile/12x12/White/FS1-2	
5	007	AcousticCeilingTile/12x12/White,Brown/FS1-1	
	008	AcousticCeilingTile/12x12/White,Brown/FS1-1	
	009	AcousticCeilingTile/12x12/White,Brown/FS1-1	
HM#	Sample #	Roofing Materials	Asb Content/Comments
6	016	RoofCoating/MobileHome/Gray,Black/FSExt	Roof Coating 2% Chrysotile
HM#	Sample #	Miscellaneous Materials	Asb Content/Comments
7	006	Undercoat/Sink/Black/FS1-1	Undercoat 2% Chrysotile
8	011	Caulk/Bathtub/White/FS1-6	
9	012	Sealant/Door/Cream/FSExt	Sealant 10% Chrysotile
10	013	Sealant/OldWindows/White,Gray/FSExt	Sealant 10% Chrysotile
11	014	Sealant/Siding/White/FSExt	
12	015	Sealant/NewWindows/White/FSExt	
13	017	BellyBoard/Brown,Black/FSCrawlspace	
	018	BellyBoard/Brown,Black/FSCrawlspace	
	019	BellyBoard/Brown,Black/FSCrawlspace	
14	Assumed	Furnace	Assumed

3.0 Functional Spaces

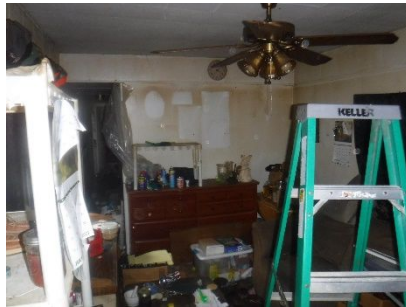
This Asbestos Survey is divided into the following Functional Spaces.

Functional Space #1 By Room



FS1-1, Kitchen, 76sqft				
HM#	Sample#	Material Description	Quantity	Asbestos Y/N
1	001	LaminateFlooring/Brown,Black	76sqft	N
2	002	FloorTile/9x9/Tan	76sqft	N
4	003-005	AcousticCeilingTile/12x12/White	40sqft	N
5	007-009	AcousticCeilingTile/12x12/White,Brown	40sqft	N
7	006	Undercoat/Sink/Black	10sqft	Y

* Quantities are estimated.



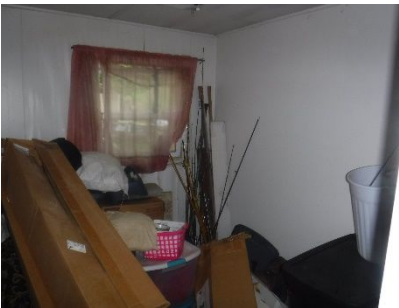
FS1-2, Living Room, 138sqft				
HM#	Sample#	Material Description	Quantity	Asbestos Y/N
1	001	LaminateFlooring/Brown,Black	138sqft	N
2	002	FloorTile/9x9/Tan	138sqft	N
4	003-005	AcousticCeilingTile/12x12/White	70sqft	N
5	007-009	AcousticCeilingTile/12x12/White,Brown	70sqft	N

* Quantities are estimated.



FS1-3, Hallway, 40sqft				
HM#	Sample#	Material Description	Quantity	Asbestos Y/N
2	002	FloorTile/9x9/Tan	10sqft	N

* Quantities are estimated.



FS1-4, Middle Bed Room, 56sqft				
HM#	Sample#	Material Description	Quantity	Asbestos Y/N
2	002	FloorTile/9x9/Tan	56sqft	N

* Quantities are estimated.



FS1-5, Laundry Room, 45sqft				
HM#	Sample#	Material Description	Quantity	Asbestos Y/N
2	002	FloorTile/9x9/Tan	45sqft	N

* Quantities are estimated.



FS1-6, Bath Room, 49sqft

HM#	Sample#	Material Description	Quantity	Asbestos Y/N
3	010	FloorTile/12x12/Cream/FS1-6	40sqft	N
8	011	Caulk/Bathtub/White/FS1-6	2sqft	N

* Quantities are estimated.



FS1-7, End Bed Room, 81sqft

HM#	Sample#	Material Description	Quantity	Asbestos Y/N
2	002	FloorTile/9x9/Tan	81sqft	N

* Quantities are estimated.



FSCrawlspace, 600sqft

HM#	Sample#	Material Description	Quantity	Asbestos Y/N
13	017-019	BellyBoard/Brown,Black/FSCrawlspace	850sqft	N

* Quantities are estimated.



FSExt, Exterior

HM#	Sample#	Material Description	Quantity	Asbestos Y/N
9	012	Sealant/Door/Cream	5sqft	Y
10	013	Sealant/OldWindows/White,Gray	10sqft	Y
11	014	Sealant/Siding/White	200sqft	N
12	015	Sealant/NewWindows/White	10sqft	N
6	016	RoofCoating/MobileHome/Gray,Black	600sqft	Y

* Quantities are estimated.